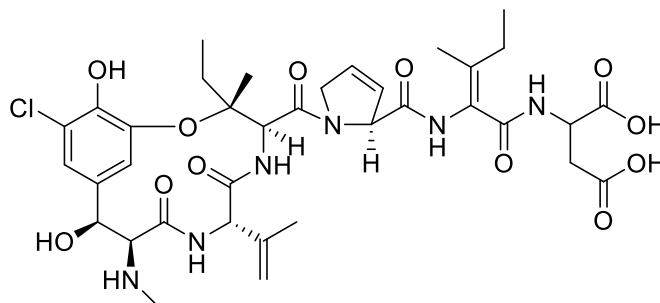


Phomopsin D

Code No.: **BIA-P2987**

Pack sizes: **0.5 mg, 2.5 mg**



Synonyms :

Specifications

CAS #	: 175617-09-1
Molecular Formula	: C₃₆H₄₇ClN₆O₁₂
Molecular Weight	: 791.3
Source	: <i>Phomopsis</i> sp.
Appearance	: Off-white solid
Purity	: >95% by HPLC
Long Term Storage	: -20°C
Solubility	: Soluble in ethanol, methanol, DMF or DMSO.

Application Notes

Phomopsin D is the dihydro derivative of phomopsin A, an acidic 13-membered cyclic hexapeptide-like metabolite with three unusual amino acids linked in an 'ansa' macrocycle. Phomopsin D, like other phomopsins, is a potent mycotoxin found in infected lupins. Phomopsin D binds selectively to dimeric tubulin at a site overlapping that of vinblastine and maytansine, inhibiting the formation of the microtubule spindle to block cell division.

References

1. Identification of novel phomopsins in lupine seed extracts. Cockrum P.A. et al. Proceedings of the 4th International Symposium on Poisonous Plants, 1994, 232.
2. Structure elucidation and absolute configuration of phomopsin A, a hexapeptide mycotoxin produced by *phomopsis leptostromiformis*. Culvenor C.C.J. et al. Tetrahedron 1989, 45, 2351.
- 3.
4. Interaction of phomopsin A and related compounds with purified sheep brain tubulin. E. Lacey et al. Biochem Pharmacol. 1987, 36, 2133.