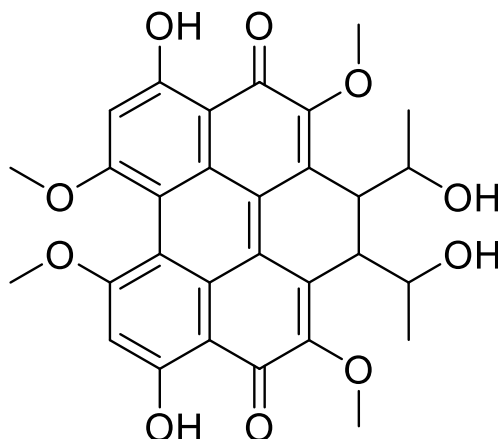


## Elsinochrome C

Code No.: **BIA-E2943**

Pack sizes: **1 mg, 5 mg**



Synonyms :

### Specifications

CAS #	: 24512-87-6
Molecular Formula	: C <sub>30</sub> H <sub>28</sub> O <sub>10</sub>
Molecular Weight	: 548.5
Source	: <i>Aspergillus</i> sp.
Appearance	: Dark red solid
Purity	: >95% by HPLC
Long Term Storage	: -20°C
Solubility	: Soluble in ethanol, methanol, DMF or DMSO.

### Application Notes

Elsinochrome C is a perylenequinone pigment produced by many Elsinoe fungal species, structurally related to cercosporin. Elsinochrome C exists in solution in approximately equal proportions of the tautomers, C1 and C2. Elsinochrome is a light-activated, nonhost-selective phytotoxin that can damage cell membranes and induce electrolyte leakage. Elsinochromes function as photosensitizing compounds that produce singlet oxygen and superoxide, thereby exerting toxicity to plant cells.

### References

1. Structure, conformational analysis, and absolute configuration of the perylenequinone pigments elsinochromes B1, B2, C1 and C2. Arnone A. et al. *Gazzetta Chimica Italiana* 1993, 123, 131.
2. Cellular toxicity of elsinochrome phytotoxins produced by the pathogenic fungus, *Elsinoë fawcettii* causing citrus scab. Liao H-L. & Chung K.R. *New Phytologist* 2008, 177, 239.