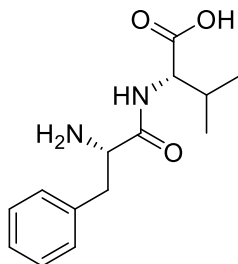


L-Phe-L-Val

Code No.: **BIA-P2370**

Pack sizes: **5 mg, 25 mg**



Synonyms : L-Phenylalanyl-L-valine, Phenylalanylvaline

Specifications

CAS #	: 3918-90-9
Molecular Formula	: C₁₄H₂₀N₂O₃
Molecular Weight	: 264.3
Source	: Synthetic
Appearance	: White solid
Purity	: >95% by HPLC
Long Term Storage	: -20°C
Solubility	: Soluble in methanol or DMSO

Application Notes

L-Phe-L-Val (phenylalanylvaline) is an incomplete breakdown product of protein digestion or protein catabolism. While little is published regarding L-Phe-L-Val, some dipeptides are known to have physiological or cell-signalling effects although most are simply short-lived intermediates on their way to specific amino acid degradation pathways following further proteolysis.

References

1. Dipeptide species regulate p38MAPK–Smad3 signalling to maintain chronic myelogenous leukaemia stem cells. Naka K. et al. Nature Commun. 2015, 6, 8039.