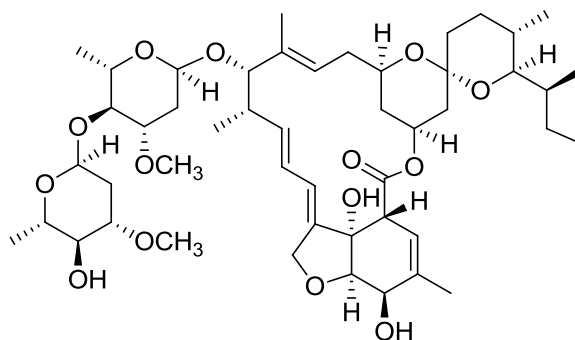


Ivermectin B1a

Code No.: **BIA-I1119**

Pack sizes: **5 mg, 25 mg**



Synonyms : Dihydroivermectin B1a, Ivermectin, 22,23-Dihydroivermectin B1a

Specifications

CAS #	: 71827-03-7
Molecular Formula	: C ₄₈ H ₇₄ O ₁₄
Molecular Weight	: 875.1
Source	: Semi-synthetic
Appearance	: White solid
Purity	: >95% by HPLC
Long Term Storage	: -20°C
Solubility	: Soluble in ethanol, methanol, DMF or DMSO. Poor water solubility.

Application Notes

Ivermectin B1a (dihydroivermectin B1a) is the major component (>80%) of the commercial anthelmintic, ivermectin. Members of the avermectin/milbemycin anthelmintic class exert their anthelmintic effects by binding to glutamate-gated chloride channels expressed on nematode neurones and pharyngeal muscle cells. The avermectins and milbemycins are also potent insecticides. The individual 25-sec-butyl (B1a) and 25-iso-propyl (B1b) components of ivermectin have received little separate study.

References

1. Ivermectin, a new broad-spectrum antiparasitic agent. Chabala J.C. et al., J. Med. Chem. 1980, 23, 1134.
2. Glutamate-gated chloride channels and the mode of action of the avermectin/milbemycin anthelmintics. Wolstenholme A.J & Rogers A.T. Parasitology, 2005, 131, S85.
3. Avermectin/milbemycin resistance in trichostrongylid nematodes. Gill J.H. & Lacey E. Int J. Parasitol. 1998, 28, 863.
4. Ivermectin: a potent new antiparasitic agent. Campbell W.C. et al., Science, 1983, 221, 823.