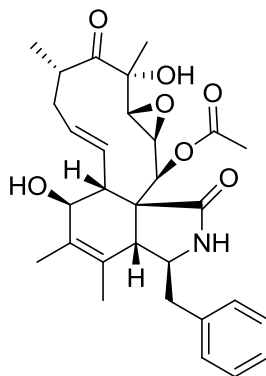


## 19,20-Epoxychochalasin C

Code No.: **BIA-E1171**

Pack sizes: **1 mg, 5 mg**



Synonyms :

### Specifications

CAS #	:	<b>189351-79-9</b>
Molecular Formula	:	<b>C<sub>30</sub>H<sub>37</sub>NO<sub>7</sub></b>
Molecular Weight	:	<b>523.6</b>
Source	:	<b><i>Geniculosporium</i> sp.</b>
Appearance	:	<b>White powder</b>
Purity	:	<b>&gt;95% by HPLC</b>
Long Term Storage	:	<b>-20°C</b>
Solubility	:	<b>Soluble in ethanol, methanol, DMF or DMSO. Poor water solubility.</b>

### Application Notes

19,20-Epoxychochalasin C is a major component of the cytochalasin complex. Although reported in the literature, there is no available biological data on the metabolite other than in-house data suggesting the presence of the epoxide renders the metabolite more active than cytochalasin C in inhibition of tumor cell growth in vitro.

### References

1. Cytochalasins and phytotoxins from the fungus *Xylaria obovata*. Abate D. et al., *Phytochemistry* 1997, 44, 1443.