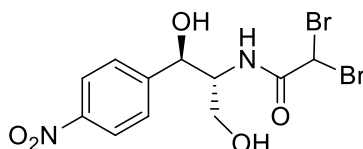


## Bromamphenicol

Code No.: **BIA-B1490**

Pack sizes: **5 mg, 25 mg**



Synonyms :

### Specifications

CAS #	: 16803-75-1
Molecular Formula	: C <sub>11</sub> H <sub>12</sub> Br <sub>2</sub> N <sub>2</sub> O <sub>5</sub>
Molecular Weight	: 412
Source	: Semi-synthetic
Appearance	: White solid
Purity	: >95% by HPLC
Long Term Storage	: -20°C
Solubility	: Soluble in ethanol, methanol, DMF or DMSO. Poor water solubility.

### Application Notes

Bromamphenicol is a semi-synthetic chloramphenicol analogue first reported in 1950, in which the dichloroacetamide is replaced with dibromoacetamide. Bromamphenicol possesses weak antibiotic activity. Comparative crystallography with chloramphenicol helped defined the SARs of the acetamide binding region on the ribosome. More recently, this relationship was used to demonstrate that chloramphenicol binding to DraE virulence factors in Gram negative bacteria was independent of chloramphenicol binding site on the ribosome.

### References

1. X-Ray analysis of some antibiotic substances. Dunitz J.D. & Leonard J.E. J. Am. Chem. Soc. 1950, 72, 4276.
2. The crystal structure of chloramphenicol and bromamphenicol. Dunitz J.D. J. Am. Chem. Soc. 1952, 74, 995.
3. A structural study of the interaction between the Dr haemagglutinin DraE and derivatives of chloramphenicol. Pettigrew D.M. et al., Acta Cryst. Set. D 2009, 65, 513.